

ELIZABETH

Robe à taille haute, mancheron et découpes pour permettre différents styles.

A: Avec empiècement au devant pour effet d'encolure en coeur B: Sans empiècement pour un effet attaché au cou ou raglan au devant.

28

tailles - sizes

High-waist dress with cap sleeve and seaming that allows for different color blocking options.

A: With a mesh insert at the front for a sweetheart neckline illusion. B: Without the inset for a halter/raglan effect in the front.

MESURES DU CORPS (FILLES) - BODY MEASUREMENTS (GIRLS)

Âge approximatif - Approximate age	2	3	4	5	6	7	8	9	10	11	12	13	
Tailles européennes - European sizes	92	98	104	112	119	127	135	142	146	150	152	155	
TAILLE JALIE - JALIE SIZES	F	G	H	I	J	K	L	M	N	O	P	Q	
	<b>1</b> TOUR DE POITRINE FULL BUST	21"	22"	23"	24"	25"	26"	27"	28"	29"	30"	31"	32"
	53 cm	56 cm	58 cm	61 cm	64 cm	66 cm	69 cm	71 cm	74 cm	76 cm	79 cm	81 cm	
	<b>2</b> TOUR DE TAILLE NATURAL WAIST	20"	20 1/2"	21"	21 1/2"	22"	22 1/2"	23"	23 3/4"	24 1/2"	25 1/4"	25 3/4"	26 1/2"
	51 cm	52 cm	53 cm	55 cm	56 cm	57 cm	58 cm	60 cm	62 cm	64 cm	66 cm	67 cm	
<b>3</b> TOUR DES HANCHES FULL HIPS	22"	23"	24"	25"	26"	27"	28"	29 1/2"	30 1/2"	32"	33"	34 1/2"	
56 cm	58 cm	61 cm	64 cm	66 cm	69 cm	71 cm	74 cm	78 cm	81 cm	84 cm	87 cm		
<b>4</b> TRONC (DEVANT+DOS) TORSO (FRONT+BACK)	35"	37"	39"	41"	43"	45"	47"	48 3/4"	50 1/2"	52"	53 3/4"	55 1/2"	
89 cm	94 cm	99 cm	104 cm	109 cm	114 cm	119 cm	123 cm	128 cm	132 cm	137 cm	141 cm		

TISSU REQUIS - YARDAGE

60" / 150 cm	CULOTTE ET BAS DU CORSAGE BRIEFS AND LOWER BODICE	3/4 yd	3/4 yd	3/4 yd	3/4 yd	3/4 yd	3/4 yd	3/4 yd	3/4 yd	1 yd	1 yd	1 yd	1 yd
Tricot avec spandex, extensible en largeur ET en longueur. TISSU PRINCIPAL: nylon/polyester + spandex, velours extensible EMPIÈCEMENT (MODÈLE A): Filet extensible (mesh) ou spandex "nu". Knit with spandex with stretch across the width AND in the length. MAIN FABRIC: Nylon or polyester + spandex, stretch velvet INSET: Stretch mesh or nude fabric.	HAUT DU CORSAGE UPPER BODICE	1/2 yd	1/2 yd	1/2 yd	1/2 yd	1/2 yd	1/2 yd	1/2 yd	1/2 yd	1/2 yd	1/2 yd	1/2 yd	1/2 yd
	EMPIÈCEMENT (MODÈLE A) INSET (VIEW A)	1/4 yd	1/4 yd	1/4 yd	1/4 yd	1/4 yd	1/4 yd	1/4 yd	1/4 yd	1/4 yd	1/4 yd	1/4 yd	1/4 yd
	JUPE SKIRT	1/2 yd	3/4 yd	3/4 yd	3/4 yd	3/4 yd	3/4 yd	3/4 yd	3/4 yd	3/4 yd	3/4 yd	3/4 yd	3/4 yd
	ÉLASTICITÉ MINIMUM REQUISE (LARGEUR + LONGUEUR) MINIMUM STRETCH REQUIRED (WIDTH + LENGTH)												

**50%** VOTRE TISSU DEVRAIT S'ÉTIRER / YOUR FABRIC SHOULD STRETCH **JUSQU'ICI / TO HERE**

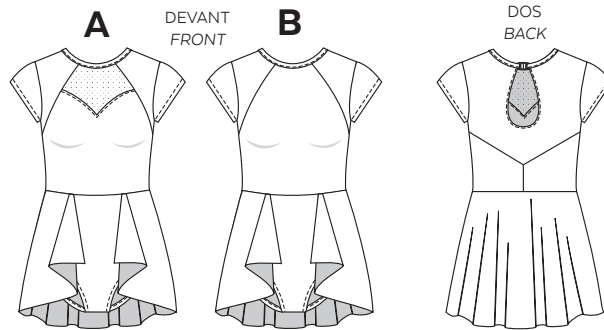
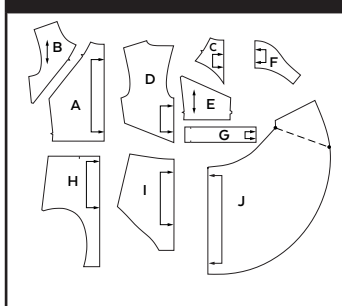
MESURES DU CORPS (FEMMES) - BODY MEASUREMENTS (WOMEN)

Taille US APPROX. US size	2	4	6	8	10	12	14	16	18	20	22	24				
Prêt-à-porter APPROX. RTW size	XS		S			M		L		XL		2XL				
Tailles euro - European sizes	34	36	38	40	42	44	46	48	50	52	54	56				
TAILLE JALIE - JALIE SIZES	R	S	T	U	V	W	X	Y	Z	AA	BB	CC	DD	EE	FF	GG
<b>1</b> TOUR DE POITRINE FULL BUST	33"	34"	35"	36"	37"	38"	39"	40"	41 1/2"	42 3/4"	44"	45 1/2"	46 3/4"	48 1/4"	49 1/2"	51"
84 cm	86 cm	89 cm	91 cm	94 cm	96 cm	99 cm	102 cm	106 cm	109 cm	112 cm	116 cm	119 cm	123 cm	126 cm	130 cm	
<b>2</b> TOUR DE TAILLE NATURAL WAIST	27"	28"	29"	30"	31"	32"	33"	34"	35 1/4"	36 1/2"	37 3/4"	39"	40 1/4"	41 1/2"	42 3/4"	44"
69 cm	71 cm	74 cm	76 cm	78 cm	81 cm	84 cm	86 cm	89 cm	93 cm	96 cm	99 cm	102 cm	105 cm	109 cm	112 cm	
<b>3</b> TOUR DES HANCHES FULL HIPS	36"	37"	38"	39"	40"	41"	42"	43"	44 1/2"	45 3/4"	47"	48 1/2"	49 3/4"	51 1/4"	52 3/4"	54"
91 cm	94 cm	96 cm	99 cm	102 cm	104 cm	106 cm	109 cm	113 cm	116 cm	120 cm	123 cm	126 cm	130 cm	134 cm	137 cm	
<b>4</b> TRONC (DEVANT+DOS) TORSO (FRONT+BACK)	57 1/4"	59"	59 1/2"	60"	60 1/2"	61"	61 1/2"	62 1/2"	63 1/2"	64"	65"	65 3/4"	66 1/2"	67 1/4"	68 1/4"	69"
145 cm	150 cm	152 cm	153 cm	154 cm	155 cm	156 cm	159 cm	161 cm	163 cm	165 cm	167 cm	169 cm	171 cm	173 cm	175 cm	

TISSU REQUIS - YARDAGE

CULOTTE ET BAS DU CORSAGE BRIEFS AND LOWER BODICE	1 yd	1 yd	1 yd	1 yd	1 yd	1 yd	1 yd	1 yd	1 yd	1 yd	1 yd	1 1/4 yd	1 1/4 yd	1 1/4 yd	1 1/4 yd	
0.80 m	0.85 m	0.85 m	0.85 m	0.85 m	0.85 m	0.85 m	0.85 m	0.85 m	0.90 m	0.90 m	0.90 m	0.90 m	0.95 m	0.95 m	0.95 m	
HAUT DU CORSAGE UPPER BODICE	1/2 yd	1/2 yd	1/2 yd	1/2 yd	1/2 yd	1/2 yd	1/2 yd	1/2 yd	1/2 yd	1/2 yd	1/2 yd	3/4 yd	3/4 yd	3/4 yd	3/4 yd	
0.40 m	0.45 m	0.45 m	0.45 m	0.45 m	0.45 m	0.45 m	0.45 m	0.45 m	0.45 m	0.45 m	0.45 m	0.50 m	0.50 m	0.50 m	0.50 m	
EMPIÈCEMENT (MODÈLE A) INSET (VIEW A)	1/4 yd	1/4 yd	1/4 yd	1/4 yd	1/4 yd	1/4 yd	1/4 yd	1/4 yd	1/4 yd	1/4 yd	1/4 yd	1/2 yd	1/2 yd	1/2 yd	1/2 yd	
0.20 m	0.20 m	0.20 m	0.20 m	0.20 m	0.20 m	0.20 m	0.20 m	0.20 m	0.20 m	0.20 m	0.20 m	0.25 m	0.25 m	0.25 m	0.25 m	
JUPE SKIRT	3/4 yd	3/4 yd	3/4 yd	3/4 yd	3/4 yd	3/4 yd	3/4 yd	3/4 yd	3/4 yd	3/4 yd	3/4 yd	3/4 yd	3/4 yd	1 yd	1 yd	1 yd
0.55 m	0.55 m	0.60 m	0.60 m	0.60 m	0.60 m	0.60 m	0.60 m	0.60 m	0.65 m	0.65 m	0.65 m	0.65 m	0.65 m	0.70 m	0.70 m	0.70 m

PIÈCES - PATTERN PIECES



MERCERIE - NOTIONS

ÉLASTIQUE 1 cm 3/8" ELASTIC	F-U	P - GG
1,50 m (1 3/4 yd)	2 m (2 1/4 yd)	
ÉLASTIQUE 6 mm 1/4" ELASTIC	F-M	N - GG
30 cm (12")	50 cm (20")	
ATTACHE CLASP		

