

Taj

By Angela Walters

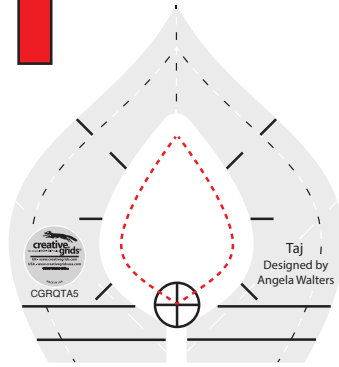


QuiltingIsMyTherapy.com

Meandering with Taj

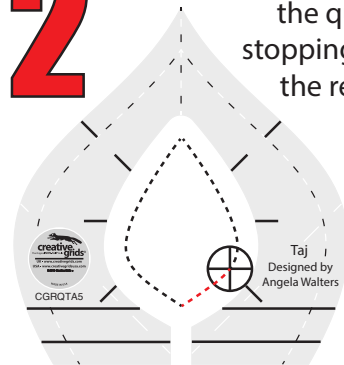
1

Place the quilting foot at the bottom of the leaf inside of the ruler. Position the ruler, then quilt around the inner shape.



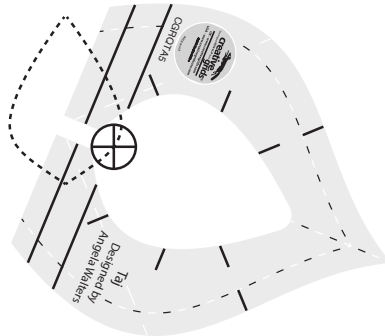
2

Without moving the ruler, travel along the quilted line, stopping at one of the registration marks.



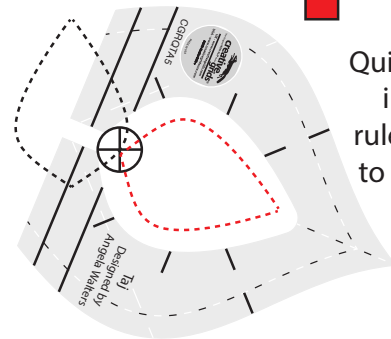
Leaving the needle down and the foot in place, reposition the ruler so that it's pointing in a different direction.

3



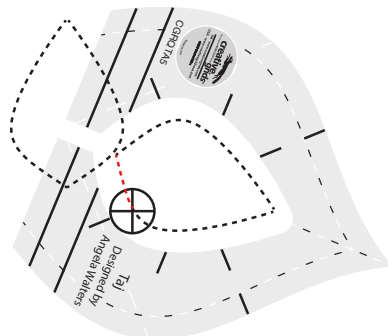
4

Quilt along the inside of the ruler returning to the starting point.



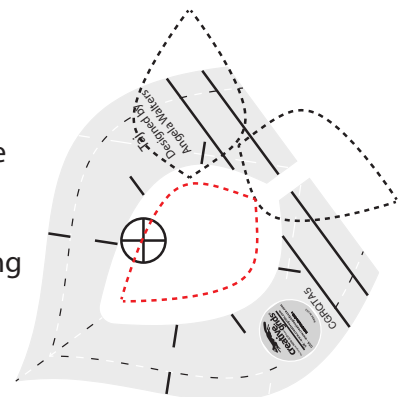
Travel along the quilted line to the reference mark.

5



6

Reposition the ruler and quilt along the inside, traveling along the quilted line.



Taj

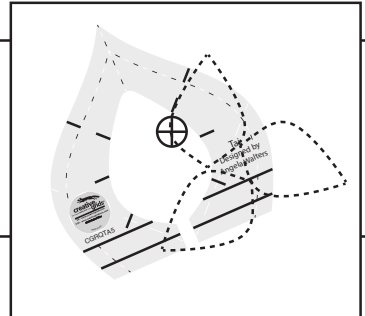
By Angela Walters



QuiltingIsMyTherapy.com

Taj Tip:

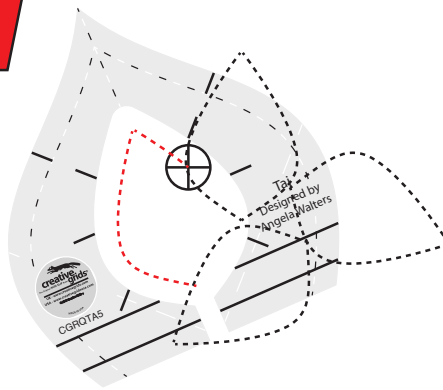
When repositioning the ruler, try to ensure that it's not overlapping a quilted line.



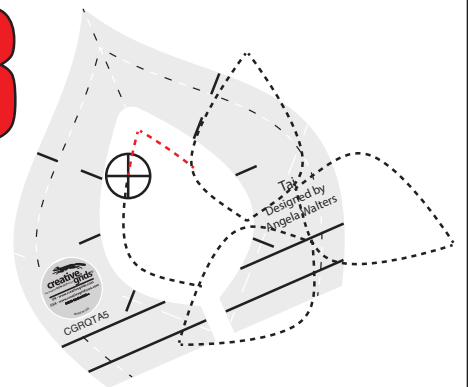
Meandering with Taj

If it's necessary to place the ruler over a quilted line, quilt along the ruler stopping when you run into the previously quilted leaf.

7



8



Travel around the quilted line until you get to an area where you can add another leaf.

Continue repositioning the ruler and quilting leaves in all different directions.

