

NON-SLIP 8" Log Cabin Trim Tool[®]

The Log Cabin Ruler features exclusive markings to help you create perfect 8" finished Log Cabin, Half Log Cabin, or Courthouse Step blocks. Since each round is squared up before the next set of logs are added, the results are spectacular.

Designed by Jean Ann Wright



creative.
The Original NON-SLIP Ruler **grids[®]**

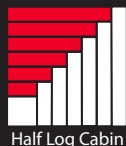
#CGRJAW1
Made in USA



Log Cabin



Courthouse Steps



Half Log Cabin

SEE A DEMO
SCAN WITH ANY
QR READER



Creative Grids[®] USA, Inc.
400 W. Dussel Dr. Ste B,
Maumee, OH 43537
www.creativegridsUSA.com

Creative Grids[®] UK, Ltd.
Unit 23A Pate Road
Leicester Road Industrial Estate
Melton Mowbray
Leicestershire, LE13 0RG England
www.creativegrids.com

Creative Grids is covered by U.S. Trademark Registration No. 2,796,615

NON-SLIP 8" Log Cabin Trim Tool[®]

Cutting Instructions for Log Cabin, Courthouse Steps, Half Log Cabin Blocks

Block size: 8" finished

Center squares: Cut a precise 2 1/2" square

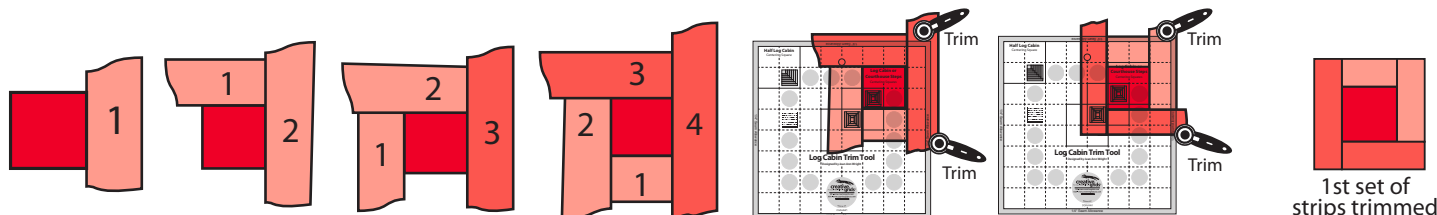
Strips: Cut the strips any width as long as they are at least 1 3/4" wide. All strips must have a straight rotary cut edge on one long side. The strip ends and the opposite long side of the strips do not need to be rotary cut, they can be ripped, wavy or angled as the strips will be trimmed after sewing using the Log Cabin Trim Tool. Cut all strips slightly longer than needed.

Sewing and Trimming Sequence for the Log Cabin Block

Note: The blocks are constructed by adding each new strip in a clockwise direction. Sew all seams with a scant 1/4" seam allowance. As you add each strip, fold the new strip out with the seam allowances towards the outside edge. Press the seams as you sew.

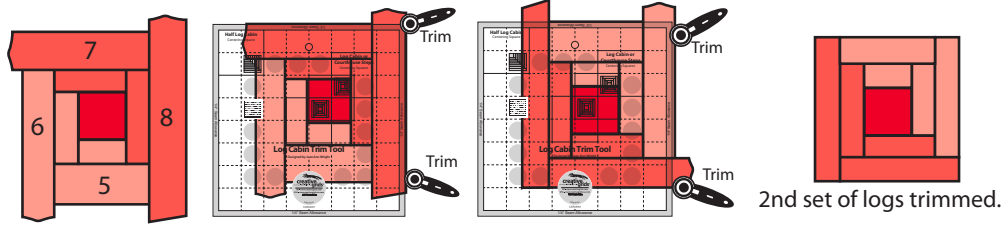
1st Set of Strips

1. With the right side of the 2 1/2" center square facing UP, place a strip that is slightly longer than 2 1/2" on top of the square with the right side facing DOWN. Stitch and press.
2. Turn the center square in a counter-clockwise direction, adding strip #2 in a clockwise direction. Stitch and press.
3. Following the method in step 2, add strips #3 and strips #4. The first set of strips around the center square is ready to trim.
4. Position the Log Cabin Trim Tool with the outside square on the tool over the center square of the pieced unit. Trim up the right side and across the top. Turn the pieced unit a half turn with untrimmed sides positioned to trim up and across.



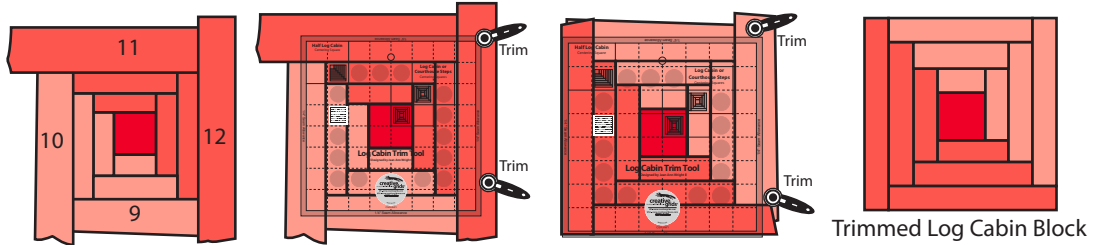
2nd Set of Log Cabin Strips

5. Repeat Steps 1 through 4 as you add the strips for the second set of strips (numbered 5 though 8) around the center square. Trim the block in the same manner as Step 4.



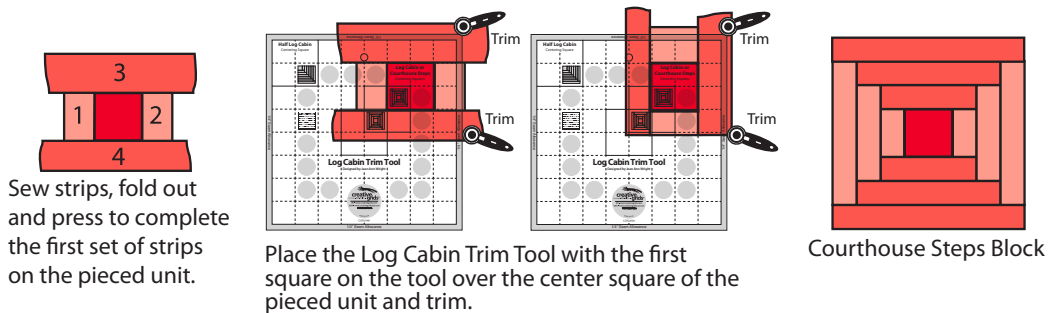
3rd Set of Log Cabin Strips

6. Repeat Steps 1 through 4 as you add the strips for the second set of strips (numbered 9 though 12) around the center square. Trim the block in the same manner as Step 4.



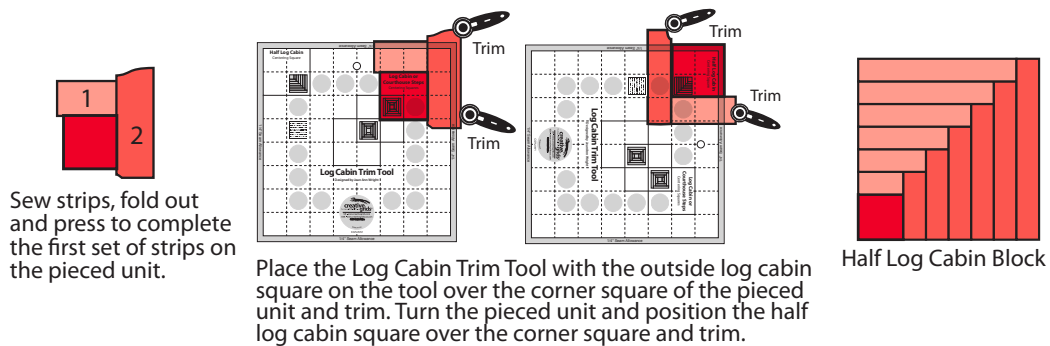
Sewing and Trimming Sequence for the Courthouse Steps Block

The Courthouse Steps block is similar to the Log Cabin block with the strips added in sequence to opposite sides, then the top and bottom of the center square. As you add strips fold out and press. Trim each set of strips as they are added.



Sewing and Trimming Sequence for the Half Log Cabin Block

To create a Half Log Cabin block add strips in sequence to two adjacent sides of a 2 1/2" corner square. Each set of strips is trimmed after sewing. As you add strips fold out and press. Trim each set of strips as they are added. Add five additional sets to make the block.



Creative Grids® USA, Inc.
400 W. Dussel Dr. Ste B,
Maumee, OH 43537
www.creativegridsUSA.com

Creative Grids® UK, Ltd.
Unit 23A Pate Road
Leicester Road Industrial Estate
Melton Mowbray
Leicestershire, LE13 0RG England
www.creativegrids.com