

Gohandmade
Dsign International A/S
HANNE
Madevej 11-13
6200 Aabenraa
DENMARK

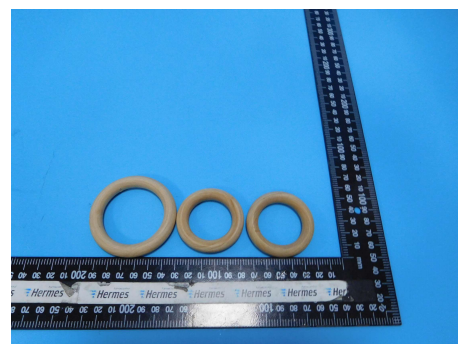
Report No.: 00447-2 SHA20
Date: 10.01.20
Order No.: SHA-22935-19
Date of order: 30.12.19
Contact: Cindy Jiang
Direct dial: +86 (21) 60725688 - 5653
Email: cindy.jiang@hansecontrol.com

Test Report

Order description:

Physical Test

Article Name	Wooden ring
Material	wood
External customer	Buyer:GOHANDMADE DSIGN INTERNATIONAL A/S
Condition of sample at delivery	no defects
Arrival date	30.12.19
Test start date	30.12.19
Test end date	09.01.20



Limit lists

Phys.	Limit values according to legal requirements
-------	--

Final conclusion: PASS

Test results and evaluation are only related to tested items and to performed methods. Detailed information regarding measurement uncertainties are available on request.

Jason Yu
Jason Yu
Senior Testing Engineer

Summary

19-068220-01 - Wooden ring

Age Group:Child (0-3)/Infant
Country of Destination:Denmark

Comply with EN71-1 & 2 requirements according to the scope of analysis.

Remark :

The CE Marking ,Manufacturer name,address and product identification are not available on the product.

The packaging is not provided .

The test item was conducted by an accredited subcontractor.

All previous versions of this report are no longer valid.

Overview of Phys. testing

Sample no	Type / Style
19-068220-01	-

Component list	
No	Components
-	Entire article

Customer requirements evaluation				
	Components			
	Tested	Result	Failed	Not tested
Flammability of toys	-	PASS		
Mechanical and physical properties	-	PASS		

Legend: Chem.: chemical tests, Phys.: physical tests, m.s.: composite sample, n.d.: not determined, n.a.: not applicable, n.t.: not tested, i.m.: insufficient material, sum: see summary, s.c.: see component, pos: positive, neg: negative, min: minimum limit, max: maximum limit, BL: below limit, IN: inconclusive

Detailed results of Phys. testing

Sample no: 19-068220-01

Mechanical and physical properties

Sample type: Phys.

Notes:

Labeling Age Grade : Not declared

Appropriate Age Grade : All ages

Testing Age Grade : All ages

Tests according to DIN EN 71-1

Clause	Safety Requirements	Test results / Remarks	Evaluation
4	General requirements		PASS
4.1	Material cleanliness		PASS
4.2	Assembly		NA
4.3	Flexible plastic sheeting		NA
4.4	Toy bags		NA
4.5	Glass		NA
4.6	Expanding materials		NA
4.7	Edges		PASS
a)	Edges of metal or glass		NA
b)	Overlap joints		NA
c)	Edges of metal and of rigid polymeric material		NA
d)	Sharp functional edges		NA
4.8	Points and metallic wires		PASS
a)	Points		PASS
b)	Sharp functional points		NA
c)	Metallic wires intended to be bent		NA
d)	Metallic wires not designed to be bent		NA
e)	Splinters on surfaces and accessible edges of toys		NA
4.9	Protruding parts		NA
4.10	Parts moving against each other		NA
4.11	Mouth actuated toys		NA
4.12	Balloons		NA
4.13	Cords of toy kites and other flying toys		NA
4.14	Enclosures		NA
4.15	Toys intended to bear the mass of a child		NA
4.16	Heavy immobile toys		NA
4.17	Projectiles		NA
4.18	Aquatic toys and inflatable toys		NA
4.19	Percussion caps specifically designed for use in toys and toys using percussion caps		NA
4.20	Acoustics		NA
4.21	Toys containing a non-electrical heat source		NA
4.22	Small balls		NA
4.23	Magnets		NA
4.24	Yo-yo balls		NA
4.25	Toys in conjunction with food		NA
4.26	Toy Disguise Costumes		NA
4.27	Flying toys		NA
5	Toys intended for children under 36 months		PASS
5.1	General requirements		PASS
a)	Toys and removable components		PASS
b)	After abuse tests		PASS

Clause	Safety Requirements	Test results / Remarks	Evaluation
c)	Metal points and wires		NA
d)	Large and bulky toys		NA
e)	Glued wooden toys and Toys with glued on plastic decals		PASS
f)	Toys intended for children too young to sit up unaided (No hazardous crack)		NA
g)	Foam toy and toy containing accessible foam component,clamps and test fixture shall not damage when tested according 8.3 and 8.4.		NA
5.2	Soft-filled toys and soft-filled parts of a toy		NA
a)	Hard and sharp contaminants		NA
b)	toy containing small parts - Tension test, seams and materials		NA
c)	toy, containing fibrous filling material - Tension test, seams and materials		NA
5.3	Plastic sheeting		NA
5.4	Cords, chains and electrical cable in toys		NA
5.4.1	General		NA
5.4.2	Cords and chains in toys intended for children under 18 months		NA
5.4.2.1	Cords and chains with the potential to tangle		NA
5.4.2.2	Two cords or chains with the potential to tangle		NA
5.4.2.3	Separated cords and chains		NA
5.4.2.4	Free length of cords and chains		NA
5.4.3	Cords and chains in toys intended for children of 18 months or over but under 36 months		NA
5.4.3.1	Cords and chains with the potential to tangle		NA
5.4.3.2	Two cords or chains with the potential to tangle		NA
5.4.3.3	Separated cords and chains		NA
5.4.3.4	Free length of cords and chains		NA
5.4.3.5	Cords and chains not suitable for children under 18 months		NA
5.4.4	Fixed loops, tangled loops and nooses		NA
5.4.5	Cords and chains on pull along toys		NA
5.4.6	Electrical cables		NA
5.4.7	Cross-sectional dimension of certain cords		NA
5.4.8	Self-retracting cords		NA
5.4.9	Toys attached to or intended to be strung across a cradle, cot or perambulator		NA
5.5	Liquid-filled toys		NA
5.6	Speed limitation of electrically-driven ride-on toys(<6km/h)		NA
5.7	Glass and porcelain(not use for children under 36months)		NA
5.8	Shape and size of certain toys		NA
5.9	Toy comprising monofilament fiber>50mm		NA
5.10	Small balls		NA
5.11	Play figures(Overall Length ≤ 64mm)		NA
5.12	Hemispheric shaped toys (packaging is included)		NA
5.13	Suction cups		NA
5.14	Straps intended to be worn fully or partially around the neck		NA
5.15	Sledges with cords for pulling		NA
6	Packaging		NA
7	Warnings, marking and instructions for use		

Clause	Safety Requirements	Test results / Remarks	Evaluation
	Marking and instructions for use	Remark: The CE marking, manufacturer name, address and product identification are not available on the product. The packaging is not provided.	*
7.1	General		NA
	Warnings on toys shall not be misleading or incorrect		NA
	A toy shall not bear a warning that conflicts with the intended use of the toy, as determined by virtue of its function, dimension and characteristics		NA
	The warnings shall be preceded by the words "Warning" or "Warnings"		NA
	The manufacturer shall mark the warnings in a clearly visible, easily legible and understandable and accurate manner on the toy, on an affixed label or on the packaging, if appropriate, include the warnings in the instructions for use.		NA
	Warnings which determine the decision to purchase the toy shall appear on the consumer packaging or be otherwise clearly visible to the consumer before the purchase.		NA
	Small toys that are sold without packaging(for example from a display box or from a vending machine) shall have the appropriate warnings affixed to them.		NA
7.2	Toys not intended for children under 36 months		NA
7.3	Latex balloons		NA
7.4	Aquatic toys		NA
7.5	Functional toys		NA
7.6	Hazardous sharp functional edges and points		NA
7.7	Projectiles		NA
7.8	Imitation protective masks and helmets		NA
7.9	Toy kites		NA
7.10	Roller skates, inline skates, skateboards and certain other ride- on toys		NA
7.11	Toys intended to be attached to or strung across a cradle, cot, or perambulator		NA
7.12	Liquid-filled teethers		NA
7.13	Percussion caps specifically designed for use in toys		NA
7.14	Acoustics		NA
7.15	Toy bicycles		NA
7.16	Toys intended to bear the mass of a child		NA
7.17	Toys comprising monofilament fibres		NA
7.18	Toy scooters		NA
7.19	Rocking horses and similar toys		NA
7.20	Magnetic/electrical experimental sets		NA
7.21	Toys with electrical cables exceeding 300 mm in length		NA
7.22	Toys with cords or chains intended for children of 18 months and over but under 36 months		NA
7.23	Toys intended to be attached to a cradle, cot or perambulator		NA

Flammability of toys

Sample type: Phys.

Tests according to DIN EN 71-2

Clause	Safety Requirements	Test results / Remarks	Evaluation
4.1	General requirements		PASS
4.2	Toys to be worn on the head		NA
4.3	Toy disguise costumes and toys intended to be worn by a child in play		NA
4.4	Toys intended to be entered by a child		NA
4.5	Soft-filled toys		NA

Report No.: 00447-2 SHA20
Order No.: SHA-22935-19
Date: 10.01.20
Page: 8 / 8

The tested item was selected by the client. Remaining test material is disposed after 3 months. The report must not be reproduced except in full content without the written approval of the testing laboratory. The report is signed digitally and password protected. For printing use the print option -document and comments-. The amount of minor components may be insufficient to perform the announced tests. In this case the test report will carry the mark: component insufficient for lab test. If testing of all components is required we need a sufficient amount of all minor components.

Flammability test (DIN EN71-2)

Test method: DIN EN 71-2:2014/ EN 71-2:2011+A1:2014

standardized method

The test methods are used for the purposes of determining the flammability of toys under the particular test conditions specified.

Mechanical Test (DIN EN 71-1)

Test method: EN 71-1:2014+A1:2018/DIN EN 71-1:2018

standardized method

This standard aims at reducing as far as possible those hazards which are not evident to users