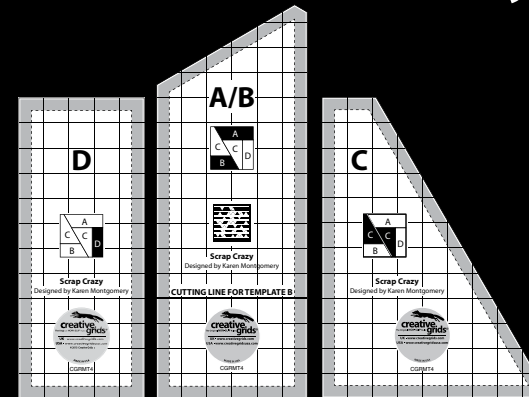
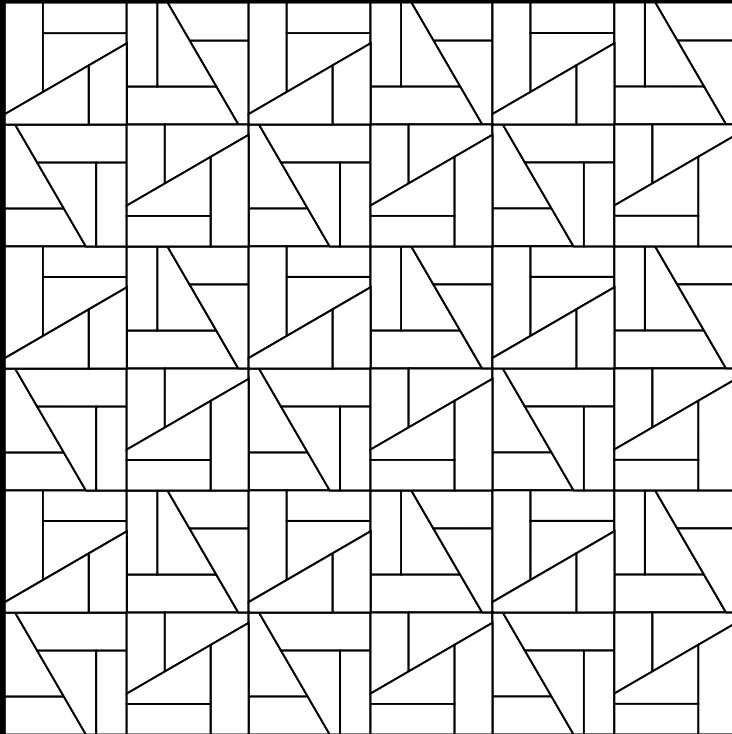


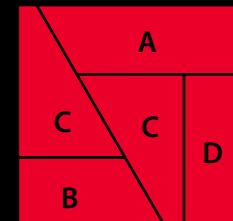
NON-SLIP Scrap Crazy

8"



Cut five pieces from three templates to create a Crazy Patch block that finishes 8". All of the pieces can be cut from scraps, 6" strips or 10" pre-cuts. Make a crazy quilt by embellishing the seams with your favorite embroidery stitches.

Designed By: Karen Montgomery



Block Diagram



NON-SLIP Scrap Crazy

To Make One 8" Finished Block

1. Select 5 assorted fabrics. Working with the fabrics **right side up** on your cutting surface cut the following:

- 1 of template A
- 1 of template B, positioning the black line on the template on a straight cut edge of the fabric (Fig.1)
- 2 of template C
- 1 of Template D

2. Arrange the pieces as shown in the layout diagram. (Fig. 2)

Stitch the D rectangle to one C piece. Press the seam toward the darker fabric.

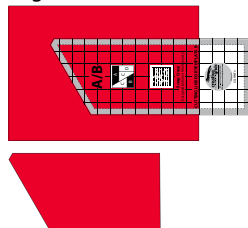
Stitch fabric A to the bottom edge of the D/C unit. Press the seam toward piece A.

3. Stitch the B piece to the remaining C piece. Press the seam toward the darker fabric. (Fig. 3)

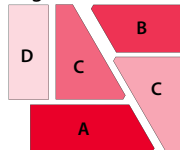
4. Stitch the A/C/D unit to the B/C unit. Notice that the clipped corners allow for perfect positioning. Press the seam to one side. (Fig. 4)

5. Your block will measure 8 1/2" including seam allowance. It will measure 8" in your finished quilt. (Fig. 5)

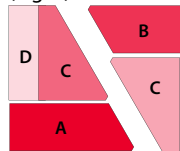
(Fig.1)



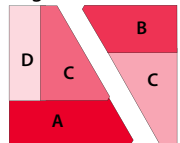
(Fig. 2)



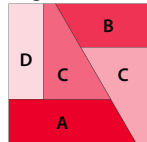
(Fig. 3)



(Fig. 4)

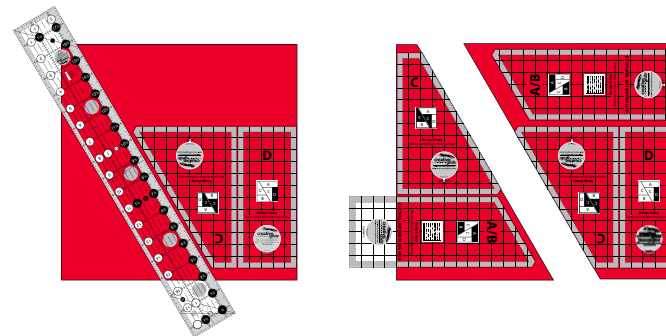


(Fig. 5)



To Cut The Templates from a 10" Square

1. Stack as many squares as you are comfortable cutting at one time, with all fabrics facing **right side up**. If all of the squares are not right side up you will be cutting mirror image blocks.
2. Place the D template in the bottom right corner of the squares as shown, approximately 1/2" from the bottom edge. Position the C template next to the D template and hold in place. Position any long ruler against the angled edge of the C template so that it extends completely across the squares. Cut along the edge of the ruler.



3. From the smaller section cut the B template and one C template as shown. From the larger section cut one A template, then one D template and the second C template.

To Cut The Templates from a 6" Strip

1. Trim the folded edge. Turn the strip segments over so that each of the fabric strips are facing **right side up**. If you do not turn the strips right side up you will be cutting mirror image blocks.
2. Working from the trimmed fold, cut one D template. Cut one C template then rotate the template 180° and cut a second C template.
3. Position the black line on the A/B template on the bottom edge of the strip and cut one B template.
4. Cut the remaining section of fabric into two strips 3" wide. From one of those strips cut one A template.

* A standard fabric with 40 or more inches usable will have enough strip left to cut an additional D or C piece before cutting it down for the A template. If you are making a scrappy quilt use the remaining 3" strip to cut additional A or B pieces.

